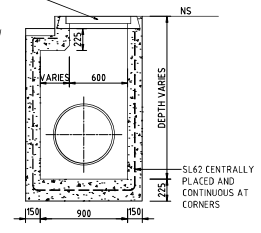
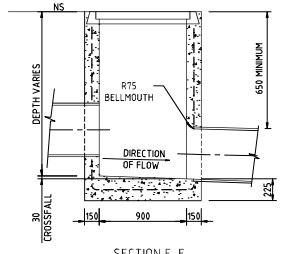


450x450 MANHOLE OR GRATED INLET PIT

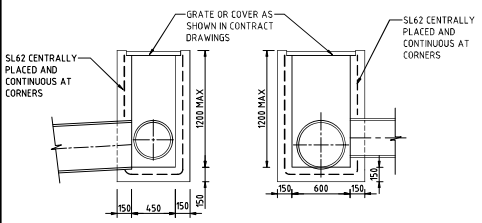
310x96 GATIC COVER
SEE GENERAL NOTE 4.
GRATED COVER TO BE
USED WHERE CALLED
FOR SEE DETAIL BELOW



REFER NOTES BELOW FOR MANHOLE INTERNAL WIDTH



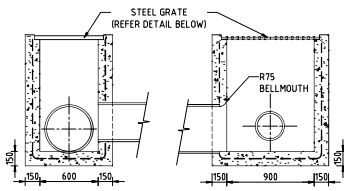
SECTION E-E



SECTION B-B

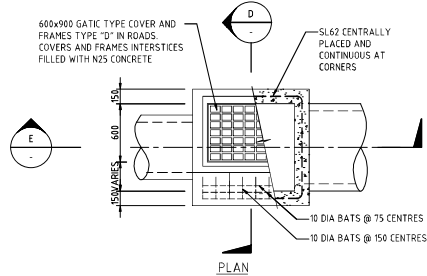
SECTION C-C

MANHOLE WIDTH:
FOR SINGLE PIPE:
- INTERNAL WIDTH EQUALS EXTERNAL DIA OF
LARGEST PIPE + 75mm WITH A MIN OF 900mm
FOR DOUBLE PIPES INTERNAL WIDTH EQUALS
THE SUM OF EXTERNAL DIA + 325mm (MAX)

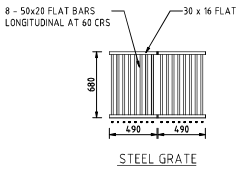


SECTION F-F

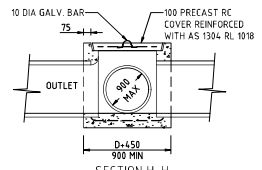
SECTION G-G



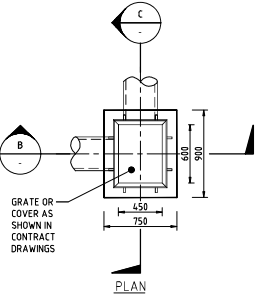
STORMWATER MANHOLE (WIDTH=900)



STEEL GRATE



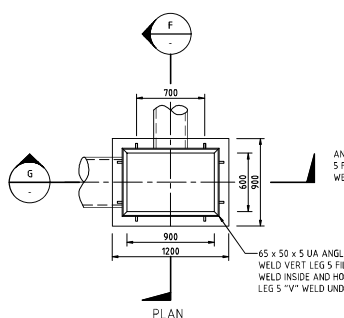
SECTION H-H



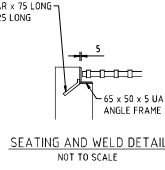
600x450 MANHOLE OR GRATED INLET PIT

GENERAL NOTES:

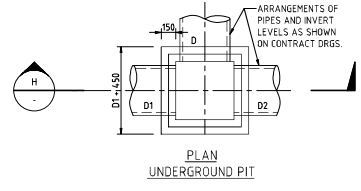
1. REFER PROJECT DRAWINGS FOR ACTUAL PIPE LOCATION. ARRANGEMENTS SHOWN IN THIS DRAWING ARE DIAGRAMMATIC ONLY.
2. USE N25 CONCRETE TO AS 1919 AND AS 3600 FOR ALL PATCHING OF PITS USE MORTAR MIXED WITH 'LOKRETE' OR SIMILAR.
3. FIBRECRETE MAY BE USED HOWEVER IF USED WITHOUT SEPARATE WALL REINFORCEMENT THEN ENGINEERING OF WALL THICKNESS IS REQUIRED.
4. GATIC PROPRIETARY OR APPROVED EQUIVALENT FRAMES GRATES AND COVERS MAY BE USED. THEY SHALL BE OF APPROPRIATE LOADING CLASS FOR THEIR SITUATION AND INSTALLED IN ACCORDANCE WITH MANUFACTURERS INSTRUCTION.
5. ALL STEELWORK TO BE CLEANED AFTER FABRICATION & HOT DIPPED GALVANISED.
6. ALL GRATES LOCATED IN THE ROADWAY OR TRAFFIC WAY ARE TO BE BICYCLE SAFE.
7. PROVIDE STABILISED BACKFILL ADJACENT TO ALL DRAINAGE STRUCTURES IN ACCORDANCE WITH LITCHFIELD COUNCIL'S STANDARD.



900x600 MANHOLE OR GRATED INLET PIT



SEATING AND WELD DETAIL NOT TO SCALE



PLAN UNDERGROUND PIT

0	DRAFT	APR17	RC
ADMT	DESCRIPTION	DATE	AUTH



PO Box 446, Humpy Doo NT 0836
PH 08 8983 0600 FAX: 08 8983 1165

DRAWN
AURECON

STANDARD DRAWING
MANHOLES AND INLET PITS

SCALE NOT TO SCALE
DRAWING No. LC-301
AMDT. 0